

DOMINION

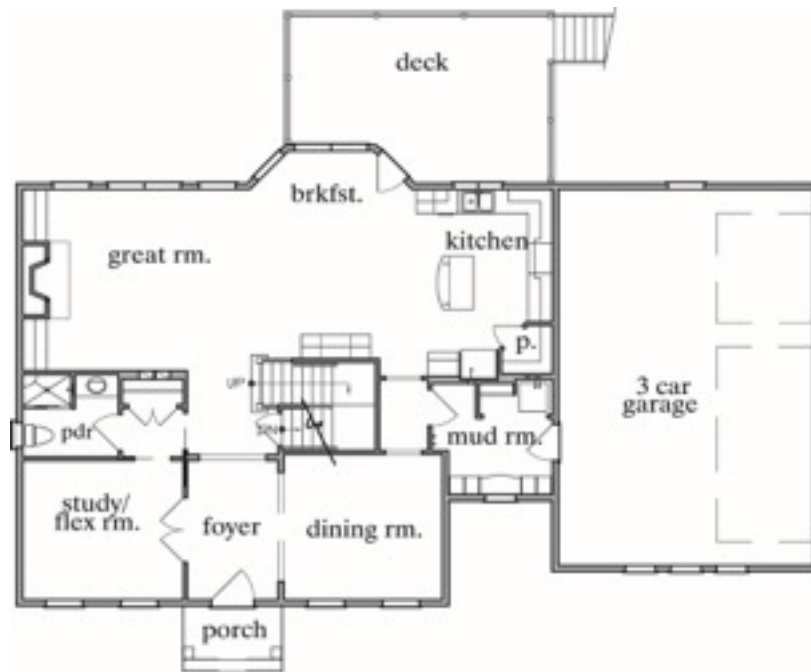
CUSTOM HOMES



The Ashburn

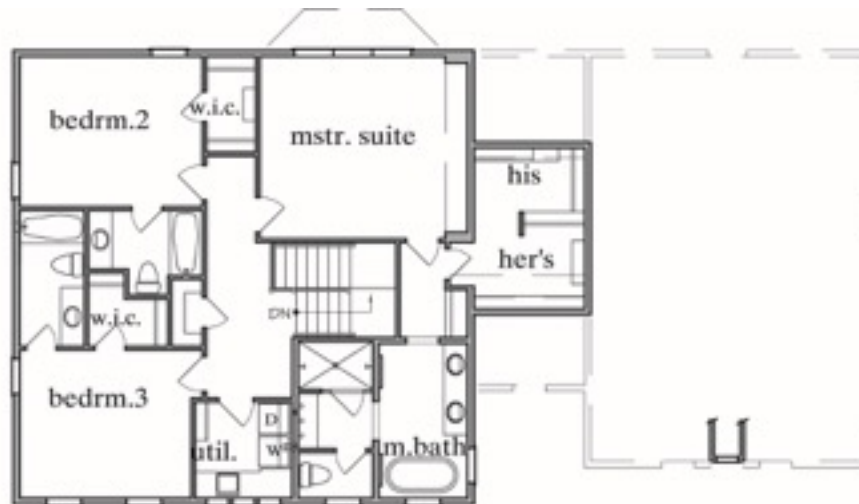
Dominion Custom Homes LLC
PO Box 6367
Charlottesville, VA 22906

(434) 975-1166
dominioncustomhomes.com



FIRST FLOOR PLAN

1505 S.F.

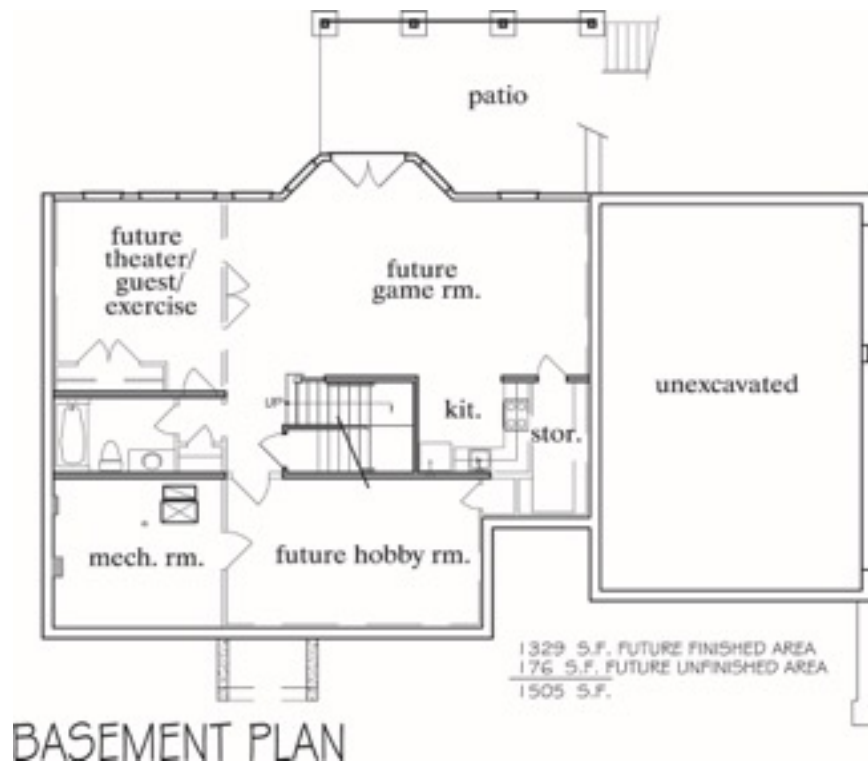


SECOND FLOOR PLAN

1310 S.F.

Dominion Custom Homes LLC
 PO Box 6367
 Charlottesville, VA 22906

(434) 975-1166
dominioncustomhomes.com



The Ashburn is a handsome new luxury home to be built in the Charlottesville community of Proffit Ridge. This home will offer exclusive interior appointments such as 3 levels of 9ft. ceilings, a main floor study/flex room with adjoining full bath in addition to the 3 bedroom suites located on the second floor, hardwood flooring on 1st/2nd level, ceramic tile in all 4 bathrooms, family room with high efficiency gas fireplace and builtin cabinetry, formal Dining Room and a custom trim package that will not disappoint. The enormous unfinished walkout Terrace level with roughed in bath will have 9 ft. ceilings and loads of storage, beautiful views and a walkout patio.

As a homebuilder, Dominion Custom Homes has years of experience employing Energy Star and EarthCraft practices that result in our homeowners enjoying energy efficient, healthy & safe homes for years to come.

Situated in the city of Charlottesville, you'll marvel at the convenience and pleasure your new home will bring. It's what you've been waiting for!

Please call John Kerber at (434)975-1166 for more information on this home, or contact Dominion Custom Homes to learn more about The Ashburn.

Dominion Custom Homes LLC
PO Box 6367
Charlottesville, VA 22906

(434) 975-1166
dominioncustomhomes.com