

# DOMINION

CUSTOM HOMES



## The Claremont

Dominion Custom Homes LLC  
PO Box 6367  
Charlottesville, VA 22906

(434) 975-1166  
[dominioncustomhomes.com](http://dominioncustomhomes.com)



**First Floor Plan**

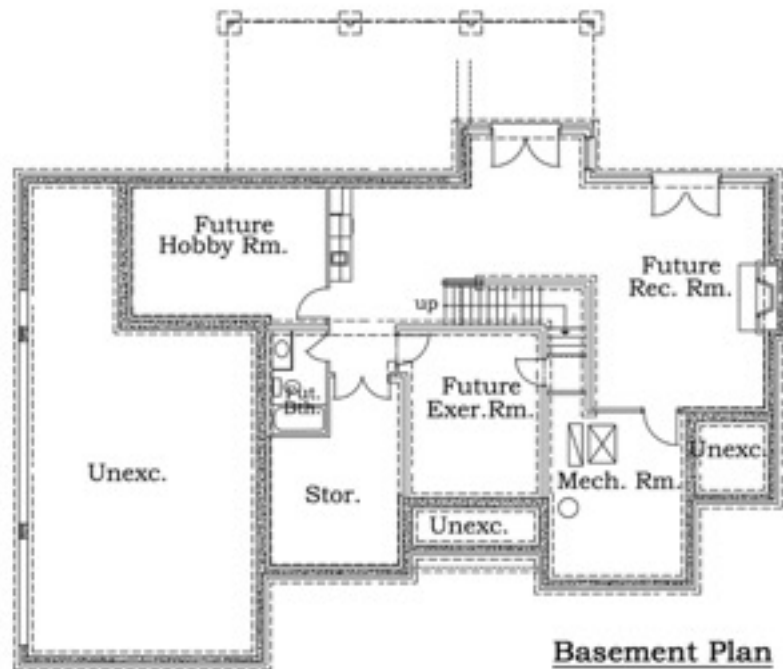
Approx. Living Area	
First Floor	1,781 sq. ft.
Second Floor	2,132 sq. ft.
<b>Total</b>	<b>3,813 sq. ft.</b>
Cov'd Porches	107 sq. ft.
Decks	415 sq. ft.
Garage	781 sq. ft.



**Second Floor Plan**

Dominion Custom Homes LLC  
 PO Box 6367  
 Charlottesville, VA 22906

(434) 975-1166  
 dominioncustomhomes.com



**Basement Plan**

The Claremont is a handsome new custom brick home to be built in Charlottesville's community of Proffit Ridge. This Luxurious 4 bedroom suite residence will offer exclusive interior appointments such as 3 levels of 9ft. ceilings, hardwood flooring on 1st/2nd level, ceramic tile & cast iron tub/shower in all 4 bathrooms, family rooms on both 1st AND 2nd levels, formal Living Room with coffered ceiling, spectacular front porches with panoramic views and a custom trim package that will not disappoint.

Dominion Development has years of experience building homes to the Energy Star and EarthCraft programs, resulting in our homeowners proudly enjoying homes that are energy efficient, healthy & safe for years to come.

Additionally, the use of cast iron plumbing, blown cellulose insulation in the walls and ceiling make it ultra-quiet. The enormous unfinished walkout Terrace level with roughed in bath will have 9 ft. ceilings and loads of storage, beautiful views and a walkout patio.

Situated in the city of Charlottesville, you'll marvel at the beauty and convenience of the Proffit Ridge community. It's what you've been waiting for!

Please call John Kerber at (434)975-1166 for more information on this home, or contact Dominion Development to learn more about The Claremont.

Dominion Custom Homes LLC  
 PO Box 6367  
 Charlottesville, VA 22906

(434) 975-1166  
 dominioncustomhomes.com